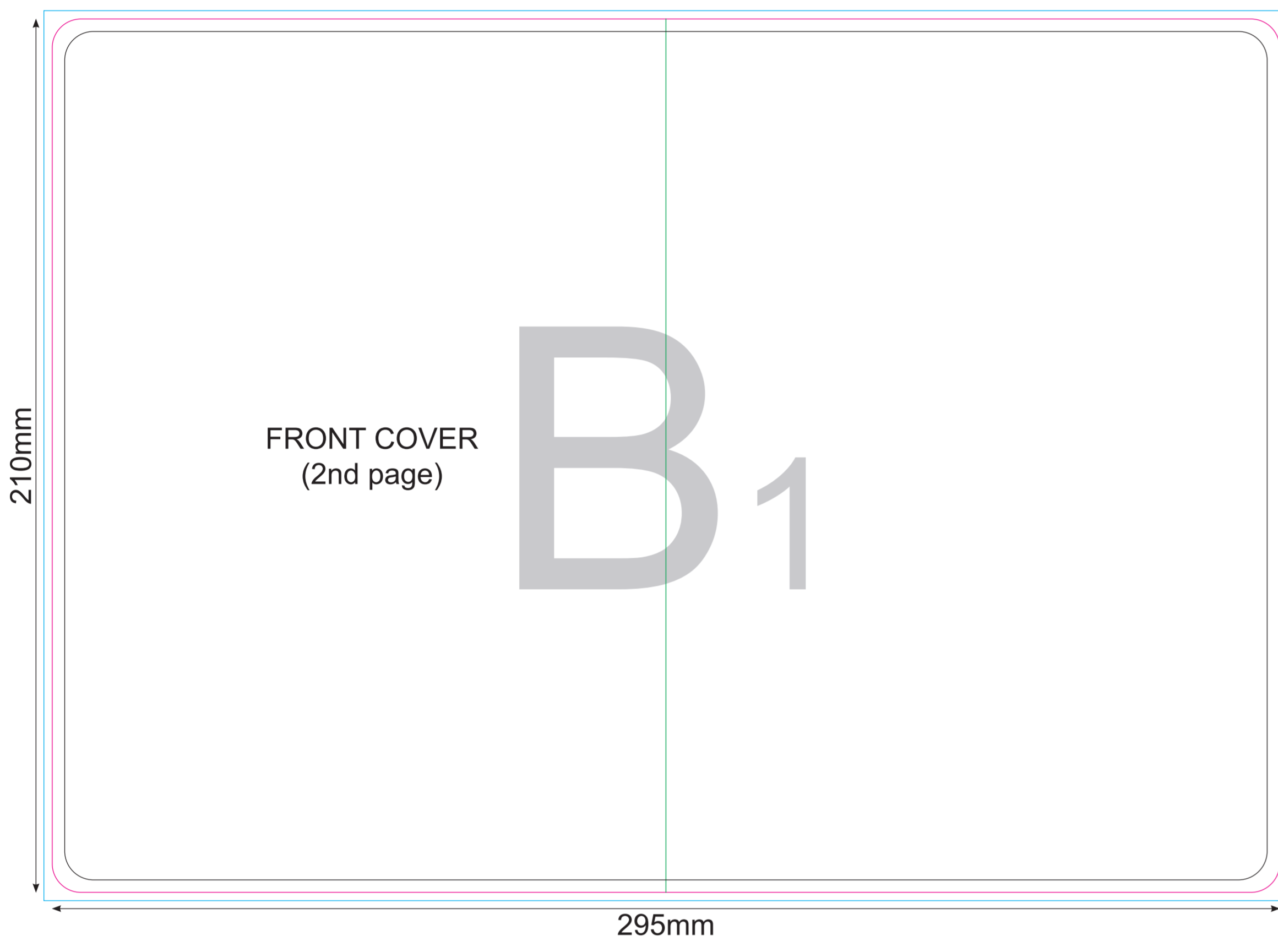
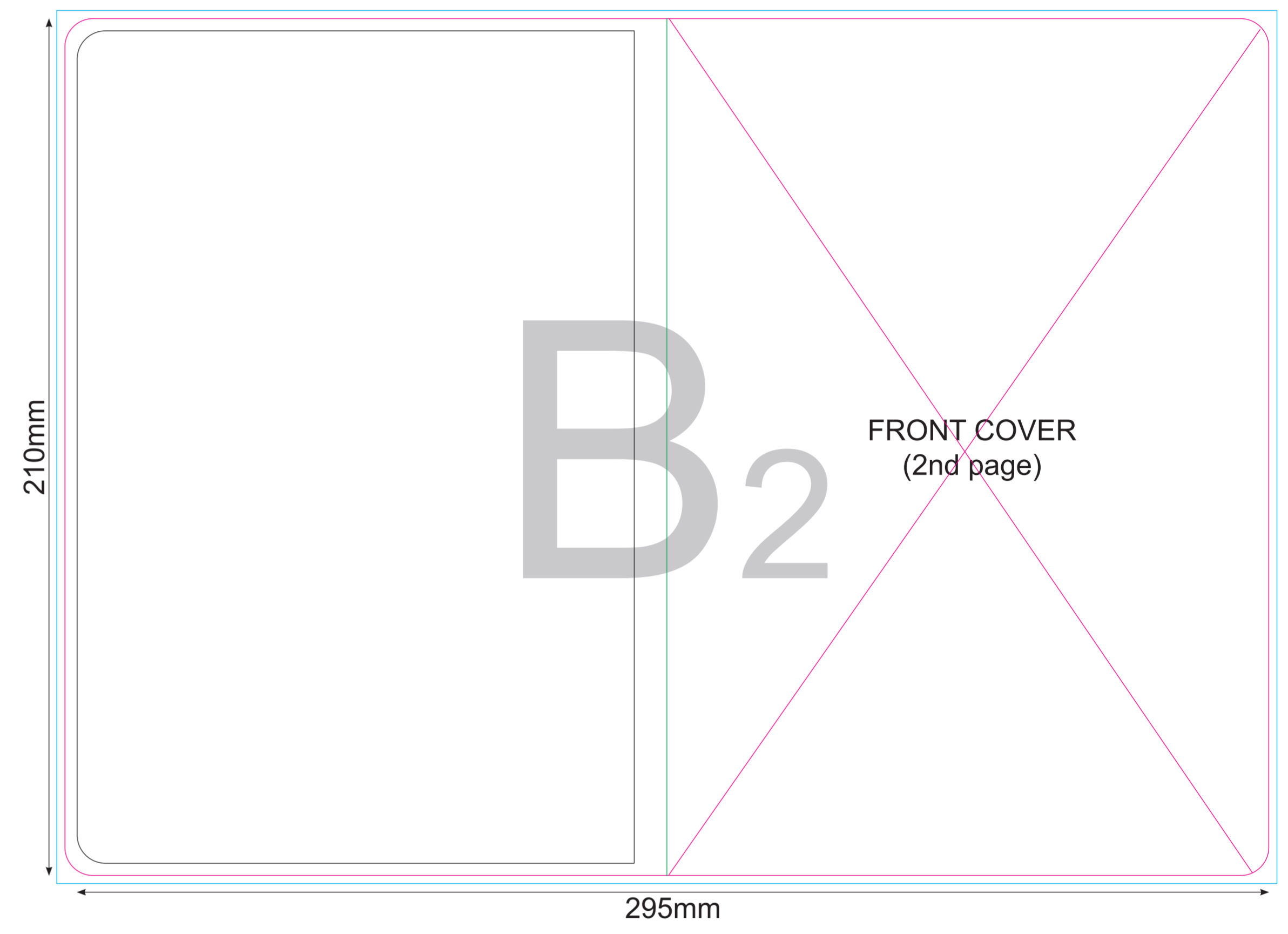


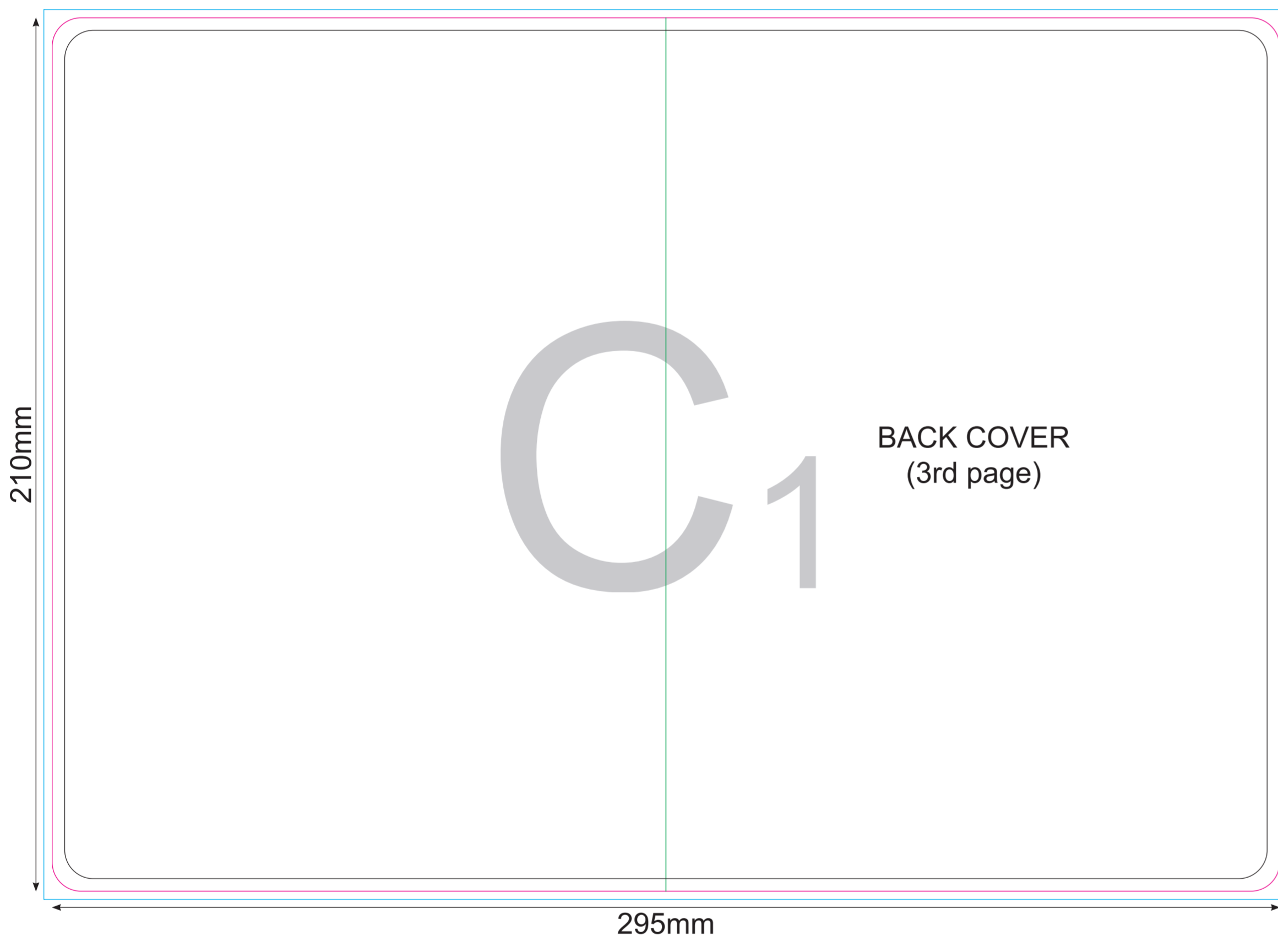
**TOP ENDSHEET - FRONT**



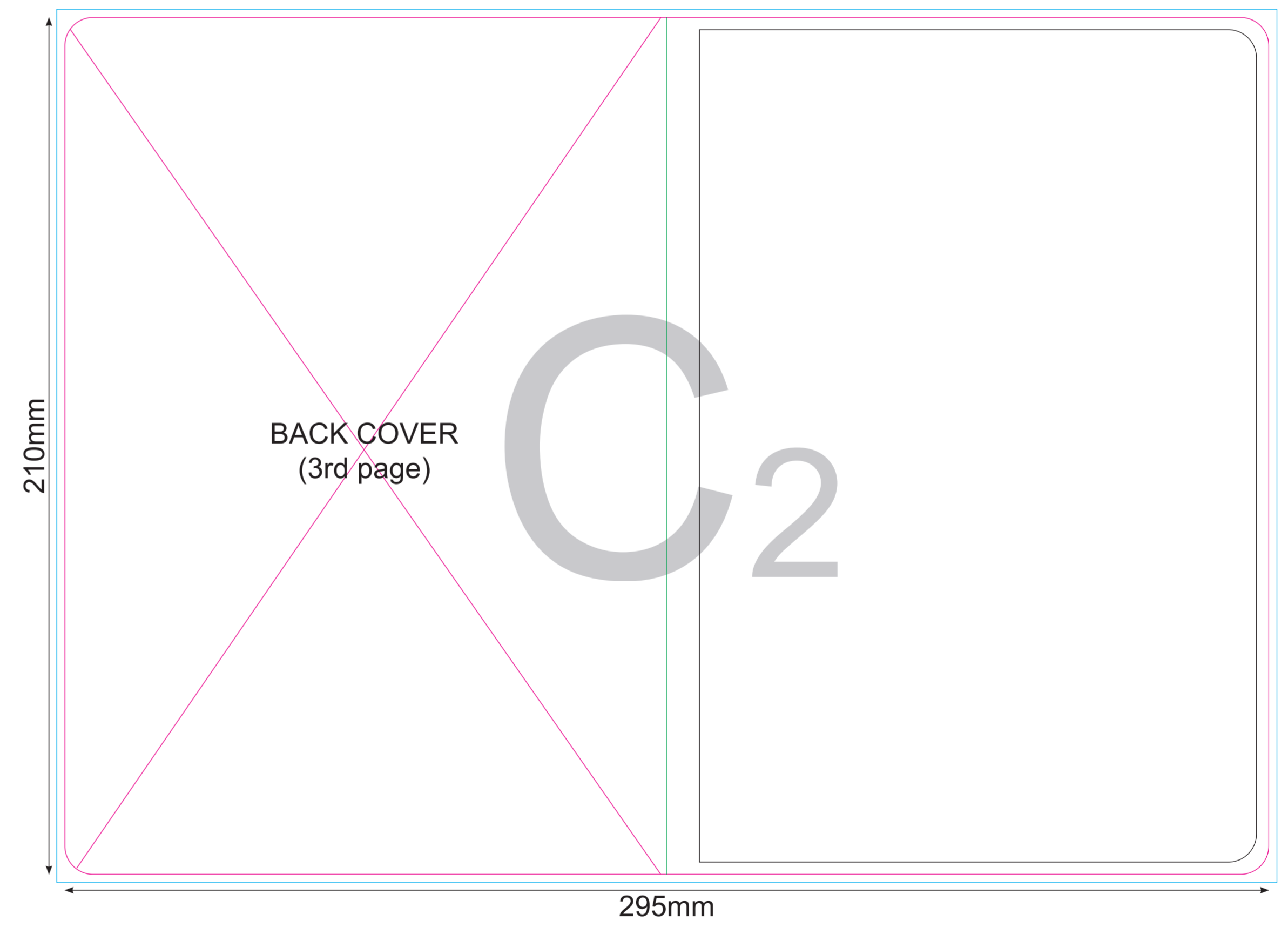
**TOP ENDSHEET - BACK**



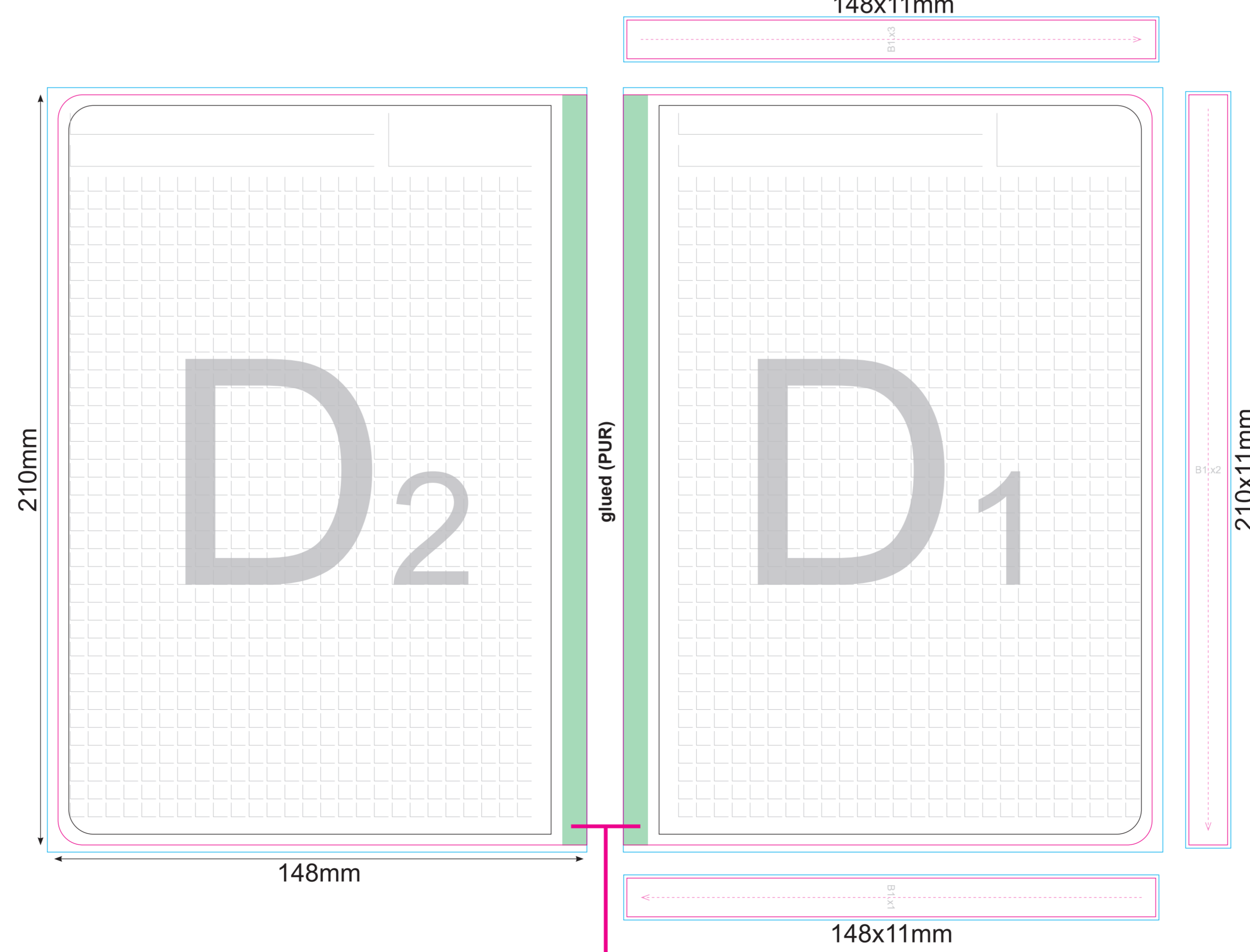
**BOTTOM ENDSHEET - FRONT**



**BOTTOM ENDSHEET - BACK**



**PUR NOTEPAD - BACK**



**Important:**  
 First page is glued to the inner cover approx. 7mm from the binding margin.  
 Last page is glued to the inner cover approx. 7mm from the binding margin.

**Important:**

Please use this page as preview/position guide.  
 Please do NOT place your materials on this page.  
 Please use next pages (2-5) for print ready files ONLY:

- page 2 - cover (A1)
- page 3-5 - edge printing

**Key:**

- Finished component size
- Bleed area. In case of bleed imprint, please extend it until blue line
- Safe print area. Keep all important text and graphics within this area
- Solid Board
- Axis of the Crease

A 1



B1x1

B1,x2





B1,x3